

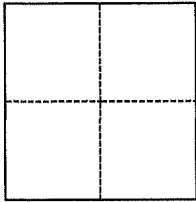
CORNER RECORD

Agency Index CR 22-131
Document Number 26-122-12.15 (ADJ)

City of CORTE MADERA County of MARIN, California
Brief Legal Description MONUMENTS AS FOUND

CORNER TYPE

COORDINATES (Optional)



- Government Corner
- Meander
- Rancho
- Control
- Property
- Other

Date of Survey 6-29-22

N. _____ E. _____
 Elevation _____
 Units Metric U.S. Survey Foot
 Horizontal Datum _____
 Zone _____ Epoch Date _____
 Vertical Datum _____
 Complies with Public Resources Code §§8801-8819
 Complies with Public Resources Code §§8890-8902

- PLS Act Ref.: 8765(d) 8771 8773 Other: _____
- Corner/Monument: Left as found Established Rebuilt Pre-Construction
 Found and tagged Reestablished Referenced Post-Construction

Narrative of corner identified and monument as found, set, reset, replaced, or removed:
 See sheet #2 for description(s): FOUND STANDARD MONUMENTS ON GRANADA DRIVE AND PALOMA DRIVE (SEE SKETCH). SET CURB CROSSES OR NAILS FOR THE POINTS. FOUND STEEL PIN IN CONCRETE IN STANDARD WELL MONUMENT; RESET WITH 2" BRASS DISC IN CONCRETE WITH PUNCH MARK, LS 7386

SURVEYOR'S STATEMENT

This Corner Record was prepared by me or under my direction in conformance with the Professional Land Surveyors' Act on SEPTEMBER 8, 2022
 Signed Gary L. Milano (P.L.S.) or R.C.E. No. 7386



COUNTY SURVEYOR'S STATEMENT

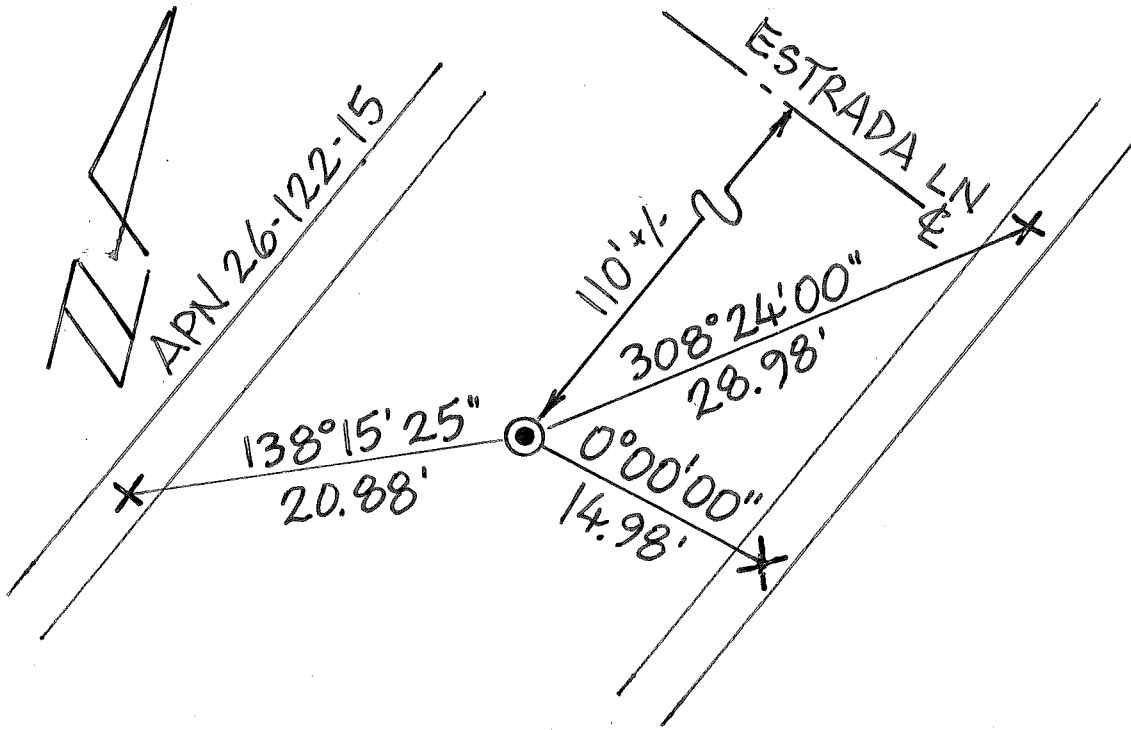
This Corner Record was received October 12, 2022
 and examined and filed October 14, 2022
 Signed T.W.P. P.L.S. [REDACTED] No. 8176
 Title County Surveyor



County Surveyor's Comment

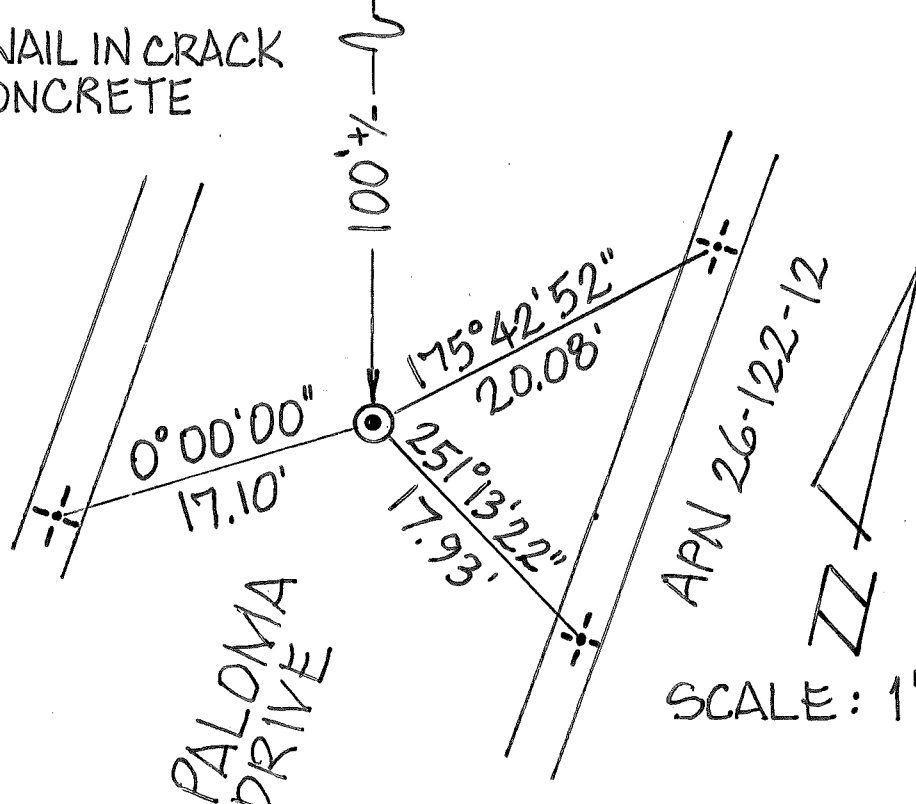
SCALE: 1" = 10'

X - SET CROSS IN CONCRETE



ESTRADA LANE

SET NAIL IN CRACK OF CONCRETE



SCALE: 1" = 10'